

FlashPan™

Wherever You Cook

Flashpan Owners Manual and Operating Instructions

Model 7002 Solid Fuel

Canada Patent Registration no. 90279

United States Patent Number DES.434,265

And other patents pending

READ INSTRUCTIONS CAREFULLY: Read and follow all instructions. Place instructions in a safe place for future reference. Do not allow anyone who has not read or who does not understand these instructions to assemble, light or operate the Flashpan cooking system.



WARNING: If the instructions in this manual are not followed exactly, a fire or explosion may result causing property damage, personal injury or loss of life.

TABLE OF CONTENTS

Safety Instructions.....	Page 1
Assembly Instructions	Page 4
Lighting the Flashpan	Page 5
Transportation and Storage	Page 6
Parts List.....	Page 7

FOR YOUR SAFETY: Exercise extreme caution once the solid fuel tablets are ignited. It may be difficult to see the flame due to the efficient burning nature of the solid fuel. The solid fuel tablets burn at a temperature in excess of 537 degrees Celsius or 1000 degrees Fahrenheit and may cause serious injury.

CARBON MONOXIDE HAZARD: The Flashpan can produce carbon monoxide, a poisonous gas which has no color or odor. Never use this appliance in an enclosed space such as a camper, tent, vehicle or building. Using the Flashpan in an enclosed space can lead to serious injury or death.

FOR OUTDOOR USE ONLY

ONCE THE FUEL IS IGNITED OR UNTIL 30 MINUTES AFTER USE:

1. Do not touch any metal parts.
2. Do not leave unattended.
3. Keep out of reach of children.
4. Do not store or use gasoline or any flammable, combustible or explosive materials in the vicinity of the Flashpan when it is operating. A resulting fire or explosion may cause serious bodily harm.

OPERATING GUIDELINES

1. Read instructions thoroughly before operating the Flashpan.
2. **DO NOT** place or store fuel tablets near flame other sources of ignition or where temperature may exceed 50 degrees Celsius or 120 degrees Fahrenheit.
3. Always use in a level horizontal position.
4. **NEVER** allow flammable materials within 30 cm or 12 inches from the Flashpan.
5. **DO NOT** allow anyone to operate setup or adjust the Flashpan without reading all instructions.
6. The Flashpan is designed only for outdoor use. Never use indoors.
7. The Flashpan is not intended for commercial use.
8. The use of alcohol and prescription or non-prescription drugs may impair the consumer's ability to properly and safely operate the Flashpan.

9. Never use charcoal, lighter fluid, lava rocks, gasoline, kerosene, or alcohol with the Flashpan.
10. The Flashpan should be thoroughly cleaned and inspected on a regular basis.
11. Use only factory authorized parts. The use of any part that is not factory authorized can be dangerous. This will also void the warranty.
12. Do not install or use in or on boats and recreational vehicles.
13. When cooking, fire extinguishing materials shall be readily accessible. In the event of an oil or grease fire, do not attempt to extinguish with water. Use type BC dry chemical fire extinguisher or smother with dirt, sand, or baking soda.
14. Do not use the Flashpan in high winds.
15. Never lean over the Flashpan when lighting.
16. Do not leave an ignited Flashpan unattended especially keep children and pets away from the Flashpan at all times.
17. Do not attempt to move the Flashpan when in use. Allow the Flashpan to cool before moving or storing.
18. Always open the Flashpan lid carefully and slowly as heat and steam trapped inside the Flashpan can severely burn you.
19. Always use the Flashpan on a hard non combustible surface.
20. Do not use the Flashpan on wooden decks.
21. Keep all electrical cords away from a hot Flashpan.
22. Do not use the Flashpan for indoor cooking or heating. Toxic fumes can accumulate and cause asphyxiation.

23. Always use a meat thermometer to ensure food is cooked to a safe temperature.
24. Death or serious injury or damage to property may occur if the above guidelines are not closely followed.

OPERATING INSTRUCTIONS

1. Set the Flashpan on a non combustible surface. Extend legs by rotating foot bottom in a counter clockwise direction to level the Flashpan, if cooking on an uneven surface.

1



2



2. Push down the pin on the handle receiver, insert the handle and release.

- Lift the pan and lid off the Flashpan base.



- Place 1 fuel tablet for low heat or 2 fuel tablets for high heat in fuel tray. **CAUTION:** Never place more than 2 fuel tablets in fuel tray.
- Light tablets with match or lighter. Allow tablets to burn for 30 seconds then place pan onto base.



- Replace the pan onto the Flashpan base and begin cooking.
- Do not allow an empty pan to sit on top of burning tablets as it may become extremely hot.

TO TURN OFF THE FLASHPAN:

1. Lift the pan off the base and extinguish the fuel tablets
2. Do not set a hot pan on a combustible surface or surface that may be damaged in any way by the heat from a hot pan. Always use a surface protector when setting a hot pan anywhere other than the Flashpan base.

CARE AND CLEANING THE FLASHPAN

1. Wash the Flashpan in warm soapy water with a soft cloth or brush. Never use a scratching pad or scrape the nonstick coating on the Flashpan.
2. Fuel tablet residue in the fuel tray can be scraped out with the edge of a scraper once it has cooled. Hot water and a scouring pad to clean the fuel tray can be used. The Flashpan is dishwasher safe.

TRANSPORTING AND STORAGE:

1. Turn off the Flashpan.
2. Allow the Flashpan to cool for 30 minutes before handling the hot base.
3. Remove handle and place in protective wrap.
4. Remove any unused fuel tablets or residue.
5. Place pan and lid onto base.
6. Wrap nylon strap around base, pan and lid and secure.
7. Retract legs if extended.

8. Place the Flashpan inside protective box or case.

PARTS DESCRIPTION: (see figure 1)

REF #	DESCRIPTION	PART #	Pieces
1	Side Handle	20100	4
2	Lid	20200	1
3	Pan	20300	1
4	Heat Shield	20204	2
5	Fuel Tray	20205	1
6	Flashpan Base	20500	1
7	Adjustable Leg	20207	4
8	Removable Handle	20502	1
9	Handle Receiver	20501	1
10	Ceramic Heat Gasket	20503	1
11	Fuel Tablets	20201	12

SPECIFICATIONS

Model # 7002

FUEL

HEXAMETHYLENETETRAMINE

CLEARANCE TO COMBUSTIBLES

Top 12" (33 CM)

Front 12" (33 CM)

Sides 12" (33 CM)

Bottom 12" (33 CM)

FLASHPAN ASSEMBLY EXPANDED VIEW

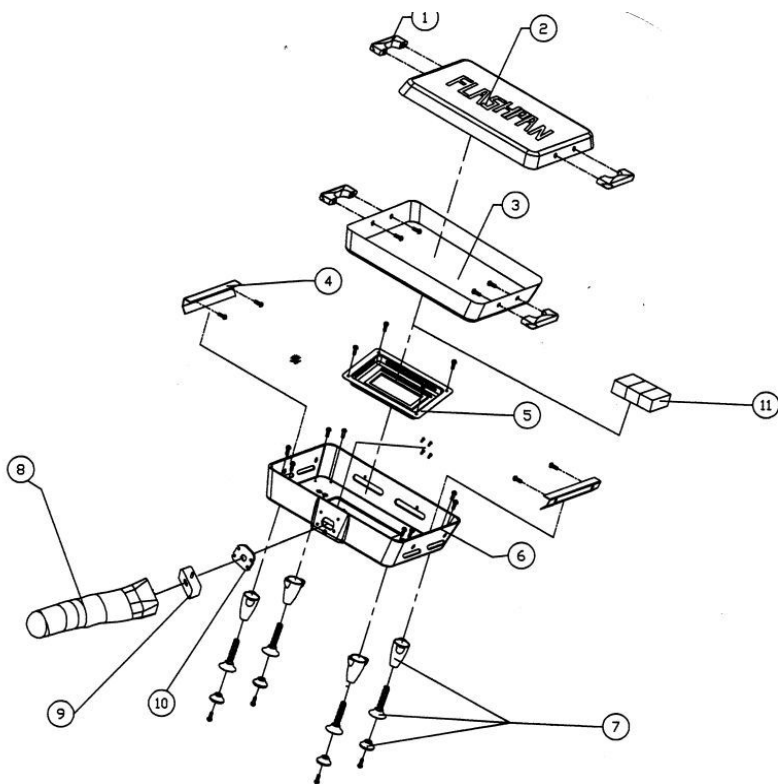


Figure 1

Limited One-Year Warranty

Flashpan Incorporated (“Flashpan”), warrants that for a period of one year from the date of original retail purchase, this product will be free from defects in material and workmanship. Flashpan, at its option, will repair or replace this product or any component of the product found to be defective during the warranty period. Replacement will be made with a new or remanufactured product or component. If the product is no longer available, replacement may be made with a similar product of equal or greater value. This is your exclusive warranty.

This warranty is valid for the original retail purchaser from the date of initial retail purchase and is not transferable. Keep the original sales receipt. Proof of purchase is required to obtain warranty performance. Flashpan dealers, service centers, or retail stores selling Flashpan products do not have the right to alter, modify or in any way change the terms and conditions of this warranty.

What This Warranty Does Not Cover

This warranty does not cover normal wear of parts, parts that are not genuine Flashpan parts, or damage resulting from any of the following: negligent use or misuse of the product; commercial use of the product; use contrary to the operating instructions; disassembly, repair or alteration by anyone other than Flashpan or an authorized service center. Further, the warranty does not cover acts of god, such as fire, flood, hurricanes and tornadoes. Warranty void if damage to product results from the use of a part other than a genuine Flashpan part.

FLASHPAN SHALL NOT BE LIABLE FOR DEFECTS THAT ARE CAUSED BY THE USE OF UNAUTHORIZED PARTS OR SERVICE. FLASHPAN SHALL NOT BE LIABLE FOR ANY INCIDENTAL OR CONSEQUENTIAL DAMAGES CAUSED BY THE BREACH OF ANY EXPRESS OR IMPLIED WARRANTY OR CONDITIONS. EXCEPT TO THE EXTENT PROHIBITED BY APPLICABLE LAW, ANY IMPLIED WARRANTY OF MERCHANTABILITY OR FITNESS FOR A PARTICULAR PURPOSE IS LIMITED IN DURATION TO THE DURATION OF THE ABOVE WARRANTY OR CONDITIONS. SOME STATES, PROVINCES, OR JURISDICTIONS DO NOT ALLOW THE EXCLUSION OR LIMITATION OF INCIDENTAL OR CONSEQUENTIAL

DAMAGES OR LIMITATIONS ON HOW LONG IMPLIED WARRANTY LASTS, SO THE ABOVE LIMITATIONS OR EXCLUSION MAY NOT APPLY TO YOU. THIS WARRANTY GIVES YOU SPECIFIC LEGAL RIGHTS THAT VARY FROM STATE TO STATE OR PROVINCE TO PROVINCE.

How to Obtain Warranty Service

Take the product to an authorized Flashpan service center. You can find the nearest authorized Flashpan service center by visiting www.flashpan.ca or calling 1-866-542-1112 in the United States or Canada. If a service center is not conveniently located, attach to the product a tag that includes your name, address, daytime telephone number and description of the problem. Include a copy of the original sales receipt. Carefully package the product and send either by courier or insured mail with shipping and insurance prepaid to:

For Products purchased in the United States:

Flashpan Incorporated.
Suite 411
104, 1240 Kensington Road, NW
Calgary, AB T2N 4X7

For Products purchased in Canada:

Flashpan Incorporated
Suite 411
104, 1240 Kensington Road, NW
Calgary, AB T2N 4X7

The costs of the transportation of the product to Flashpan or an authorized service center for warranty service are the responsibility of the purchaser. Do not mail products with fuel in tanks, or with disposable propane cylinders.

DO NOT RETURN THIS PRODUCT TO THE PLACE OF PURCHASE.

If you have any questions regarding this warranty please call 1-866-542-1112 in the United States or Canada.